

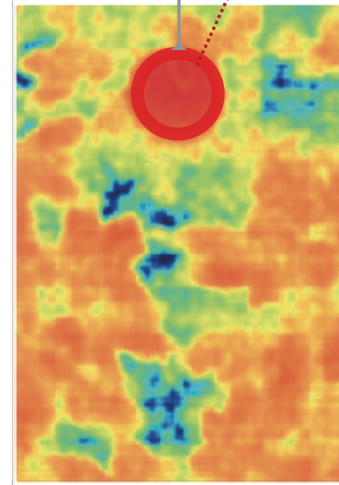


Stomata Camera+



Sigrow Dry Air Wireless Sensor:

- PAR + Ventilated Air/Relative Humidity
- *Dry Leaf*



What is the *Dry Leaf*?

It is a surface connected to the *Sigrow wireless sensor* that **behaves thermally like a leaf with closed stomata**, essentially a “dry leaf” that functions as a temperature reference for your actual plants. It unlocks **accurate calculations** and **intuitive images** for your analysis.

How does it work?

It's really intuitive; look at the image - if plant temperatures are getting close to the *dry leaf* then your stomata are closing. **Closed stomata limit CO₂, Ca and Mg uptake.** Try increasing your relative humidity and managing your light-water balance to **open your plants stomata again.**

Discover. Visually.

General inquiry: info@sigrow.com · Technical inquiry: support@sigrow.com



Stomata Camera+

Hardware

Thermal Camera+

- Thermal camera (100x200 px)
 - HD Cam
- Requires Industrial Central Camera Manager

€ 975,-

Sigrow Dry Air

- PAR
- Air temperature with forced fan
- Dry leaf reference
- Solar powered with lithium battery
- Wireless: +250 meters

Requires Industrial Central Camera Manager or gateway v5

€ 500,-

Industrial Central Camera Manager

- Uploads all the required data to cloud via:
- LoRa / 5G / 4G / Wifi / Ethernet
 - Access via app.sigrow.com
 - Up to 10 cameras
 - 250 meters range

€ 1500,-

Start Pack

Including: Thermal Camera+, Sigrow Dry Air, Industrial Central Manager

€ 2500,-

Software and Services

	A Essentials	B Extended	C Premium
5G KPN Sigrow Wireless Sensors connectivity	3	10	Unlimited
Support	E-mail	E-mail	E-mail Phone < 2 hours
Accounts included	1	Unlimited	Unlimited
Discovery services	-	-	1 hour/year
Devices Installation Service Benelux	-	-	10 Sigrow Wireless Sensors
Price per month	€ 45,-	€ 75,-	€ 85,-
Stomata Camera Software	+ € 45,- / Thermal Camera+		

The monthly prices are guaranteed in EU until January 2022 for SLA's signed before December 2020. Sigrow guarantees that the prices will not increase more than 10% per year. Coverage via 4G is subject to the local availability. Sigrow reserves the option to deploy using Ethernet/WiFi for eligible locations where 4G connectivity is not reliable, in that case intervention of IT/Network administrator for DHCP enabling, VPN access and MySQL insertion. •For more detail consult your Service Level Agreement (SLA)

StomataCamera+ Information

100% Satisfaction or investment back We are confident that you will enjoy your discoveries and improvements with Sigrow technology. If during the first 4 weeks you don't you can return it to us and we will return you 100% of your investment back (in 5 years of operation it has not happened).